

IPv6 WG, 22. 11. 2011

Ukázky statistik IPv6 provozu ve VI CESNET

Tom Košňar

CESNET

- IPv6 day
 - 8. 6. 2011
- IPv6 provoz ve VI CESNET
 - Souhrnný pohled

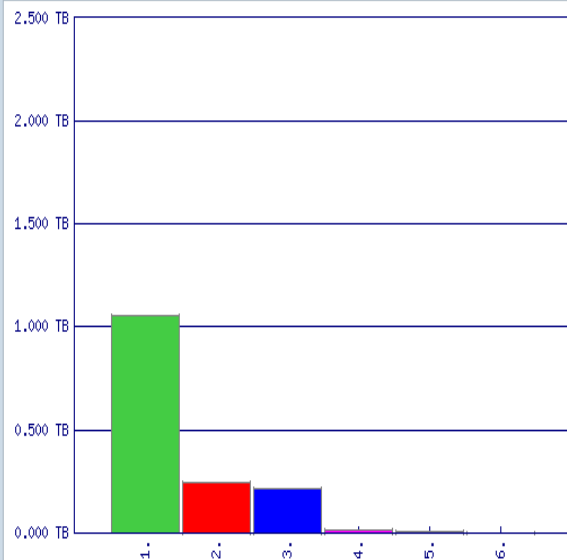
IPv6 day – příchozí provoz – boxy a rozhraní

Results (time values in CET)

Bytes-estimated: volumes

Summary

In graph	1.538 TB	100.00%
Rest of results	0.000 TB	0.00%
Total	1.538 TB	100.00%

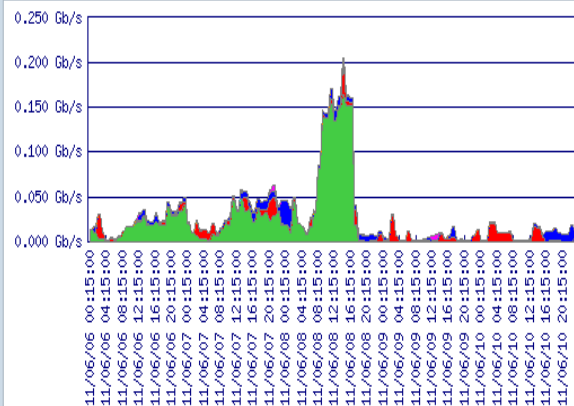
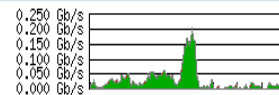


	Src-if/index	Bytes-estimated	Flow-Data-Source
1.	TenGigabitEthernet2/1, Te2/1, NIX3-KCP [local loop] 2001:7f8:14:0:0:1:1.91.210.16.191	1.058 TB ~ 68.787%	Prague 2: R114 - border router (NIX-3, Public Internet backup)(398)
2.	TenGigabitEthernet1/4, Tel/4, 10GE GN2 2001:798:13:10aa:0:0:2.62.40.124.30	0.245 TB ~ 15.902%	Prague 1: R115 - border router (AMS-IX, GN2, TWAREN)(11)
3.	GigabitEthernet3/3, G3/3, 1 Gbps to AMS-IX [via GN2] 43/10->15/3->Tray6-3,4->dxc1 12/14 2001:7f8:1:0:0:a500:2852:1.195.69.145.106	0.217 TB ~ 14.121%	Prague 1: R115 - border router (AMS-IX, GN2, TWAREN)(11)
4.	Vlan401, Vl401, PtP_Cesnet-Sanet	11.885 GB ~ 0.754%	Brno 1: R98 - border router (ACONET, SANET, SIX, VIX)(29)
5.	TenGigabitEthernet1/4, Tel/4, Telia B2, IC-126239 2001:2000:3080:4b:0:0:2.213.248.79.102	5.905 GB ~ 0.375%	Prague 2: R114 - border router (NIX-3, Public Internet backup)(398)
6.	Vlan404, Vl404, PtP_Cesnet-Aconet	0.971 GB ~ 0.062%	Brno 1: R98 - border router (ACONET, SANET, SIX, VIX)(29)

Bytes-estimated: rates

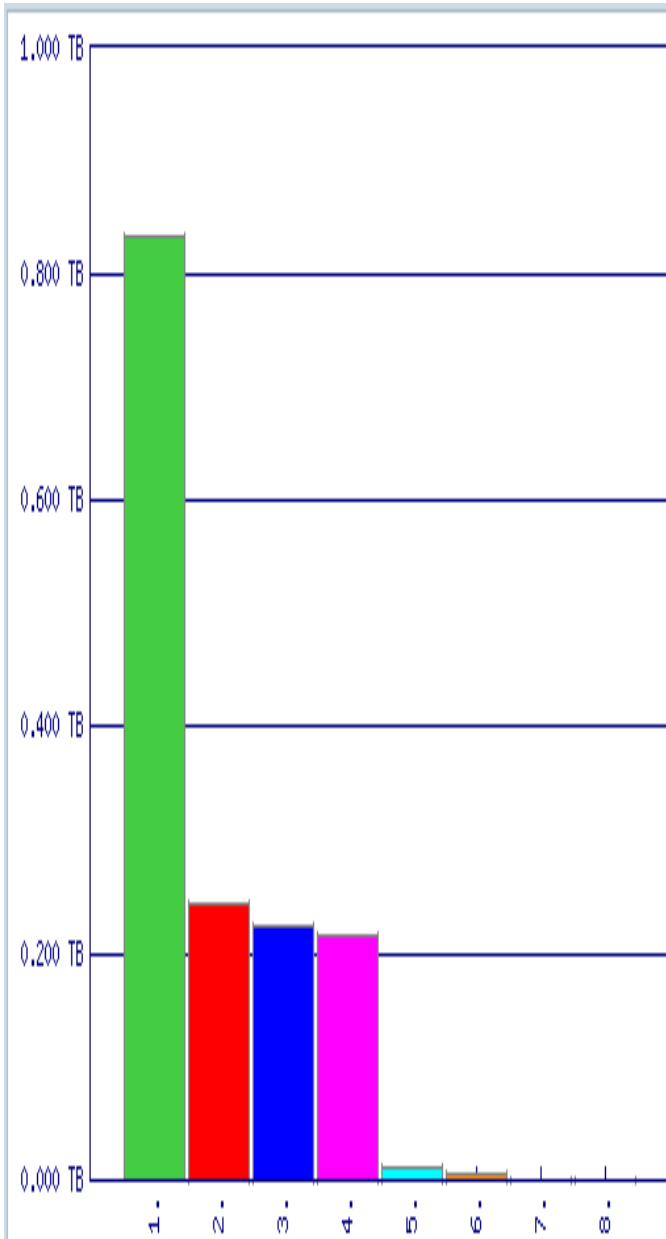
Summary

In graph	1.538 TB	100.00%
Rest of results	0.000 TB	0.00%
Total	1.538 TB	100.00%



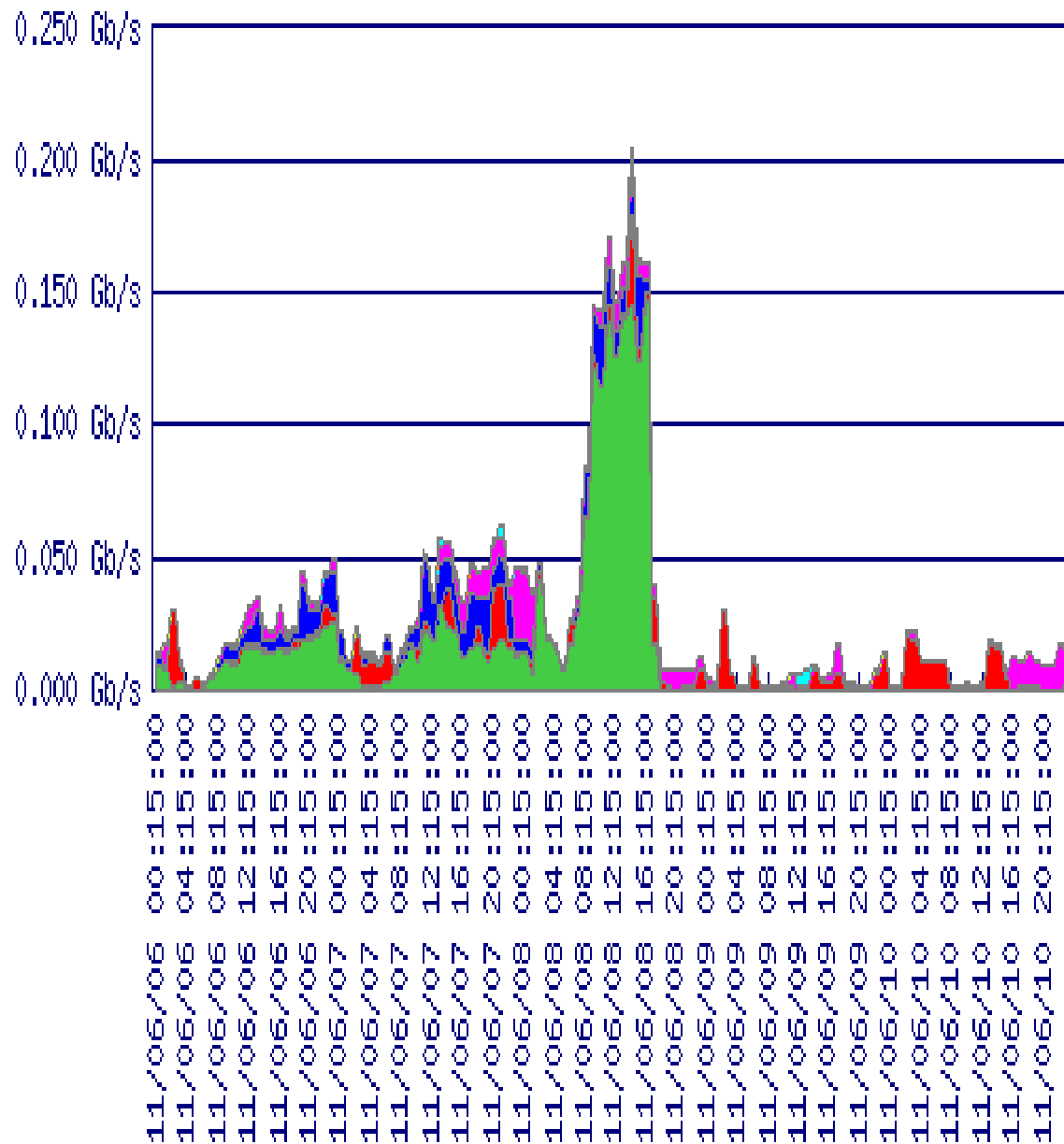
	Src-if/index	Bytes-estimated	Flow-Data-Source
1.	TenGigabitEthernet2/1, Te2/1, NIX3-KCP [local loop] 2001:7f8:14:0:0:1:1.91.210.16.191	1.058 TB ~ 68.787%	Prague 2: R114 - border router (NIX-3, Public Internet backup)(398)
2.	TenGigabitEthernet1/4, Tel/4, 10GE GN2 2001:798:13:10aa:0:0:2.62.40.124.30	0.245 TB ~ 15.902%	Prague 1: R115 - border router (AMS-IX, GN2, TWAREN)(11)
3.	GigabitEthernet3/3, G3/3, 1 Gbps to AMS-IX [via GN2] 43/10->15/3->Tray6-3,4->dxc1 12/14 2001:7f8:1:0:0:a500:2852:1.195.69.145.106	0.217 TB ~ 14.121%	Prague 1: R115 - border router (AMS-IX, GN2, TWAREN)(11)
4.	Vlan401, Vl401, PtP_Cesnet-Sanet	11.885 GB ~ 0.754%	Brno 1: R98 - border router (ACONET, SANET, SIX, VIX)(29)
5.	TenGigabitEthernet1/4, Tel/4, Telia B2, IC-126239 2001:2000:3080:4b:0:0:2.213.248.79.102	5.905 GB ~ 0.375%	Prague 2: R114 - border router (NIX-3, Public Internet backup)(398)
6.	Vlan404, Vl404, PtP_Cesnet-Aconet	0.971 GB ~ 0.062%	Brno 1: R98 - border router (ACONET, SANET, SIX, VIX)(29)

IPv6 day – příchozí provoz – rozhraní a organizační vazba



	<i>Src-ifindex</i>	<i>Bytes-estimated</i>	<i>Src-Object</i>
1. >	TenGigabitEthernet2/1, Te2/1, NIX3-KCP [local loop] 2001:7f8:14:0:0:1:1,91.210.16.191	0.834 TB ~ 54.239%	Google
2. >	TenGigabitEthernet1/4, Te1/4, 10GE GN2 2001:798:13:10aa:0:0:2,62.40.124.30	0.245 TB ~ 15.902%	GEANT2 IP at r115
3. >	TenGigabitEthernet2/1, Te2/1, NIX3-KCP [local loop] 2001:7f8:14:0:0:1:1,91.210.16.191	0.224 TB ~ 14.548%	NIX.cz at r114
4. >	GigabitEthernet3/3, Gi3/3, 1 Gbps to AMS-IX [via GN2] 43/10->15/3->Tray6-3,4->dxc1 12/14 2001:7f8:1:0:0:a500:2852:1,195.69.145.106	0.217 TB ~ 14.119%	AMS-IX peering at r115
5. >	Vlan401, V1401, PtP_Cesnet-Sanet	11.885 GB ~ 0.754%	SANET, SIX peering
6. >	TenGigabitEthernet1/4, Te1/4, Telia B2, IC-126239 2001:2000:3080:4b:0:0:2,213.248.79.102	5.905 GB ~ 0.375%	public Internet via Telia at r114
7. >	Vlan404, V1404, PtP_Cesnet-Aconet	0.971 GB ~ 0.062%	ACONET, VIX peering at r98
8. >	GigabitEthernet3/3, Gi3/3, 1 Gbps to AMS-IX [via GN2] 43/10->15/3->Tray6-3,4->dxc1 12/14 2001:7f8:1:0:0:a500:2852:1,195.69.145.106	22.750 MB ~ 0.001%	Google

IPv6 day – zdroje organizačně v čase



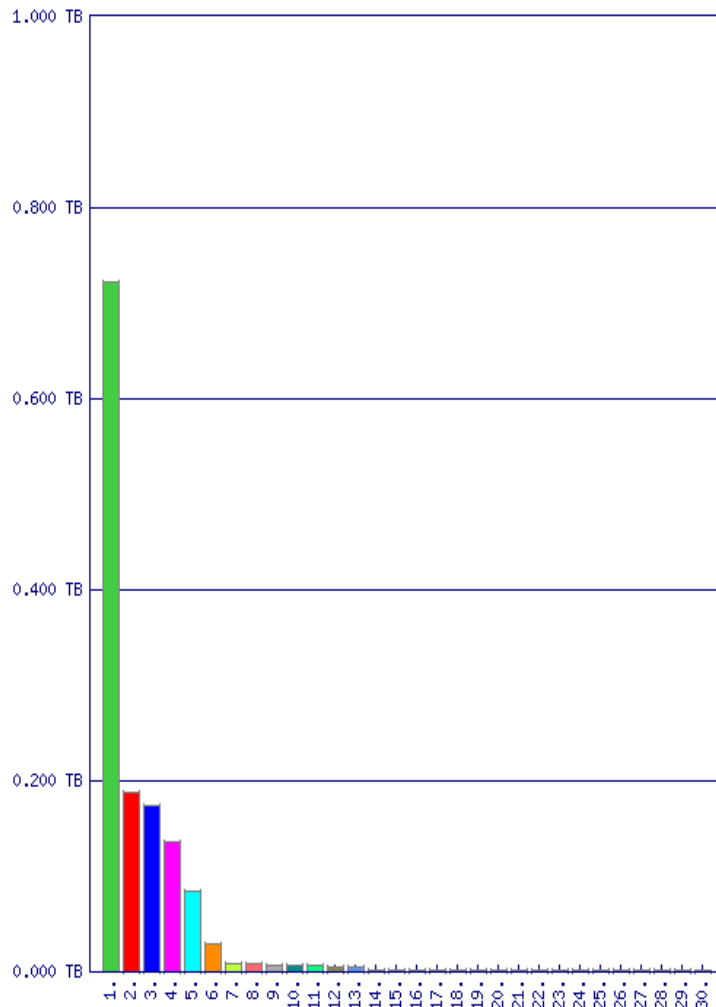
		<i>Bytes-estimated</i>	<i>Src-Organization</i>
1.	>	0.834 TB ~ 54.240%	Google
2.	>	0.245 TB ~ 15.902%	GEANT2 IP Service
3.	>	0.224 TB ~ 14.548%	NIX.cz
4.	>	0.217 TB ~ 14.119%	AMS-IX peering
5.	>	11.885 GB ~ 0.754%	SANET, SIX peering
6.	>	5.905 GB ~ 0.375%	public Internet
7.	>	0.971 GB ~ 0.062%	ACONET, VIX peering

IPv6 day – top zdrojové IP

Bytes-estimated: volumes

Summary

In graph	1.404 TB	91.29%
Rest of results	0.134 TB	8.71%
Total	1.538 TB	100.00%

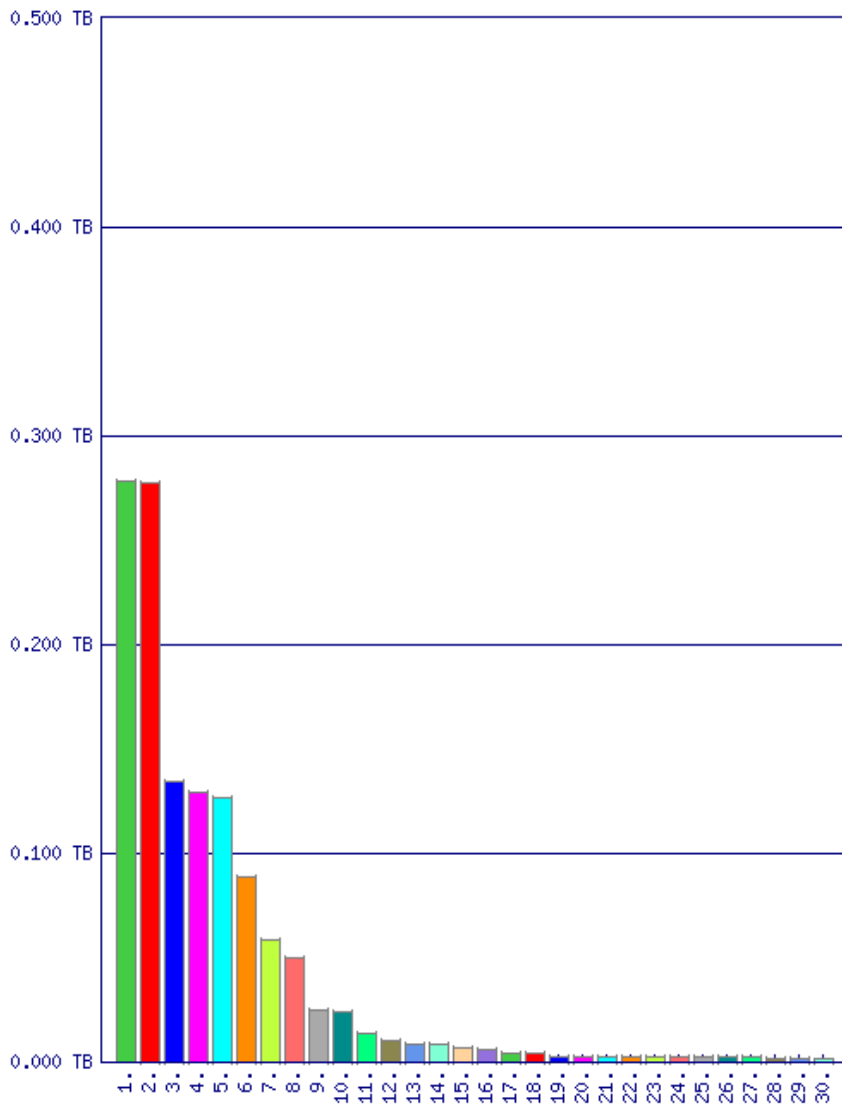


	Src-IP	Bytes-estimated	Src-Object
1		0.722 TB ~ 46.915%	Google
2		191.718 GB ~ 12.171%	NIX.cz at r114
3		177.549 GB ~ 11.271%	AMS-IX peering at r115
4		139.445 GB ~ 8.852%	GEANT2 IP at r115
5	2001:638:902:1:0:0:0:11 6bone.informatik.uni-leipzig.de	86.845 GB ~ 5.513%	GEANT2 IP at r115
6	2a01:430:6:6272:616d:0:6e:6472 ndr.anafra.net	29.289 GB ~ 1.859%	NIX.cz at r114
7	2001:770:18:aa40:0:0:c101:c140 ftp.heanet.ie	9.205 GB ~ 0.584%	GEANT2 IP at r115
8		9.040 GB ~ 0.574%	SANET, SIX peering
9	2001:6c8:2:600:0:0:0:132 ftp.beastie.tdk.net	6.802 GB ~ 0.432%	AMS-IX peering at r115
10	2a00:1790:2:2:0:0:0:33	6.775 GB ~ 0.430%	NIX.cz at r114
11	2001:67c:174:101:0:0:0:1337	6.451 GB ~ 0.410%	AMS-IX peering at r115
12		5.070 GB ~ 0.322%	public Internet via Telia at r114
13	2001:5c0:1400:a:0:0:0:25	4.610 GB ~ 0.293%	AMS-IX peering at r115
14	2a00:1450:4001:9:0:0:0:d	2.366 GB ~ 0.150%	Google
15	240f:9:8a2b:1:30ad:6795:cda8:719	2.167 GB ~ 0.138%	AMS-IX peering at r115
16	2a00:1450:4001:6:0:0:0:18	2.101 GB ~ 0.133%	Google
17	2a02:130:800:3080:4cf9:63b3:8836:9f7b	1.810 GB ~ 0.115%	SANET, SIX peering
18	2a00:1450:4001:2:0:0:0:e	1.611 GB ~ 0.102%	Google
19	2a01:368:1c0:31a7:0:0:0:2 2a01-0368-01c0-31a7-0000-0000-0000-0002.pool6.digikabel.hu	1.565 GB ~ 0.099%	AMS-IX peering at r115
20	2002:59b2:f99:0:0:0:59b2:f99	1.530 GB ~ 0.097%	AMS-IX peering at r115
21	2001:da8:200:102:214:22ff:fe78:fa4e	1.503 GB ~ 0.095%	GEANT2 IP at r115
22	2403:da00:1:3:0:0:0:1e	1.422 GB ~ 0.090%	GEANT2 IP at r115
23	2a00:1450:4001:d:0:0:0:17	1.325 GB ~ 0.084%	Google
24	2002:5f18:7eae:0:0:0:5f18:7eae	1.306 GB ~ 0.083%	AMS-IX peering at r115
25	2a00:1450:4001:11:0:0:0:e	1.306 GB ~ 0.083%	Google
26	2002:57f7:43ca:0:0:0:57f7:43ca	1.295 GB ~ 0.082%	GEANT2 IP at r115
27	2a00:1450:4001:7:0:0:0:11	1.260 GB ~ 0.080%	Google
28	2a00:1450:4001:e:0:0:0:11	1.253 GB ~ 0.080%	Google
29	2001:470:1f0b:13d2:0:0:0:49	1.200 GB ~ 0.076%	AMS-IX peering at r115
30	2001:6b0:e:2018:0:0:0:142 caesar.acc.umu.se	1.192 GB ~ 0.076%	GEANT2 IP at r115

IPv6 day – top cílové IP

Summary

In graph	1.284 TB	83.45%
Rest of results	0.255 TB	16.55%
Total	1.538 TB	100.00%

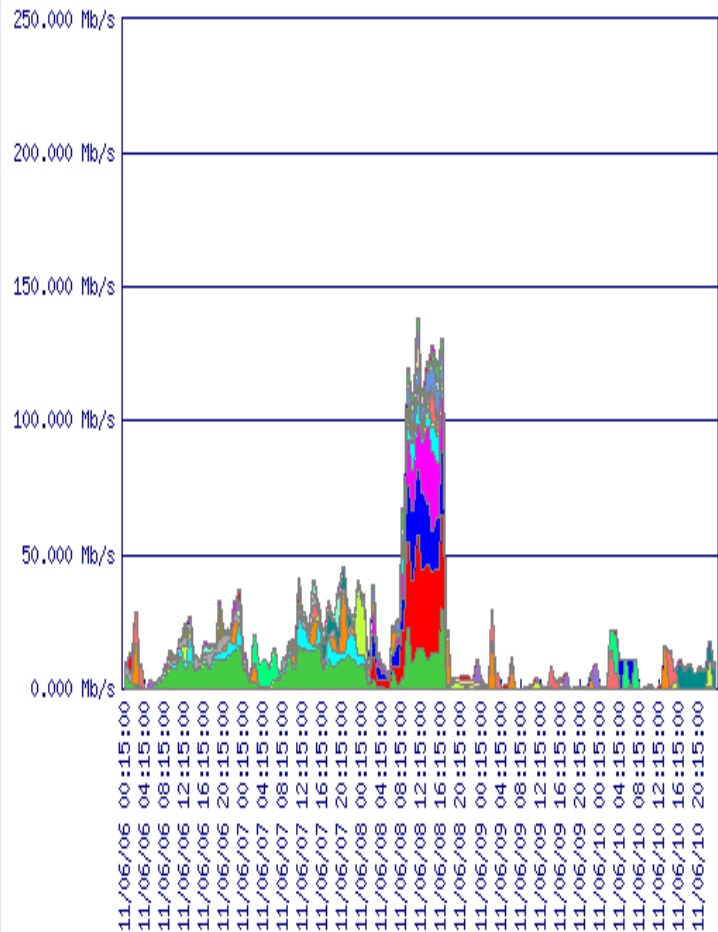
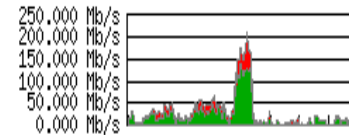


	<i>Dst-IP</i>	<i>Bytes-estimated</i>	<i>Dst-Object</i>
1.		0.278 TB ~ 18.082%	TUO Ostrava
2.		0.277 TB ~ 18.017%	VUT Brno
3.		137.900 GB ~ 8.754%	UK Praha
4.		132.000 GB ~ 8.380%	CVUT Praha
5.		129.817 GB ~ 8.241%	VSE Praha
6.	2001:67c:1220:809:0:0:93e5:91e ftp6.fit.vutbr.cz, mlada.fit.vutbr.cz	90.592 GB ~ 5.751%	VUT Brno
7.		59.875 GB ~ 3.801%	TUL Liberec
8.	2001:718:2:0:0:0:0:222 ftp.sh.cvut.cz	51.462 GB ~ 3.267%	CVUT Praha
9.		25.390 GB ~ 1.612%	CESNET Praha
10.		24.391 GB ~ 1.548%	SLU Karvina
11.		13.677 GB ~ 0.868%	MU Brno
12.	2001:67c:1220:c1b2:21b:fccf:fe60:6320	10.946 GB ~ 0.695%	VUT Brno
13.	2001:718:2:1100:224:e8ff:fe37:89c1	9.146 GB ~ 0.581%	CVUT Praha
14.	2001:718:1e02:9116:9db3:e57e:a356:d7fe	8.389 GB ~ 0.533%	VSE Praha
15.	2001:718:801:230:0:0:0:8c pyrrha.ip6.fi.muni.cz	6.624 GB ~ 0.420%	MU Brno
16.		5.928 GB ~ 0.376%	UK Marianske Lazne
17.	2001:718:1e03:aed1:21f:3bff:fe43:49d1	4.610 GB ~ 0.293%	UK Praha
18.		4.354 GB ~ 0.276%	ZCU Plzen
19.	2001:718:1e02:9116:e822:3978:d6bd:1a14	3.082 GB ~ 0.196%	VSE Praha
20.		2.973 GB ~ 0.189%	CESNET2
21.	2001:718:1001:691:982f:96ae:131:28ac	2.891 GB ~ 0.184%	TUO Ostrava
22.	2001:718:1e02:9102:ca2a:14ff:fe28:3882	2.853 GB ~ 0.181%	VSE Praha
23.		2.828 GB ~ 0.180%	UK Hradec Kralove
24.	2001:718:4:1:b525:557:ec8d:c438	2.754 GB ~ 0.175%	UK Marianske Lazne
25.	2001:718:2:900:4860:f298:bd84:f5f6	2.638 GB ~ 0.167%	CVUT Praha
26.	2001:718:1001:692:14f4:4daa:97a3:a7ce	2.325 GB ~ 0.148%	TUO Ostrava
27.	2001:718:1e02:9114:d4d5:aefe:d1f:8a6f	2.286 GB ~ 0.145%	VSE Praha
28.	2001:718:1e02:9102:5414:9e73:fb31:9e96	2.150 GB ~ 0.136%	VSE Praha
29.	2001:718:801:230:0:0:0:cd odysseus.ip6.fi.muni.cz	2.013 GB ~ 0.128%	MU Brno
30.	2001:718:1001:69a:3116:fa1d:732d:4306	1.997 GB ~ 0.127%	TUO Ostrava

IPv6 day – top „IP-IP“

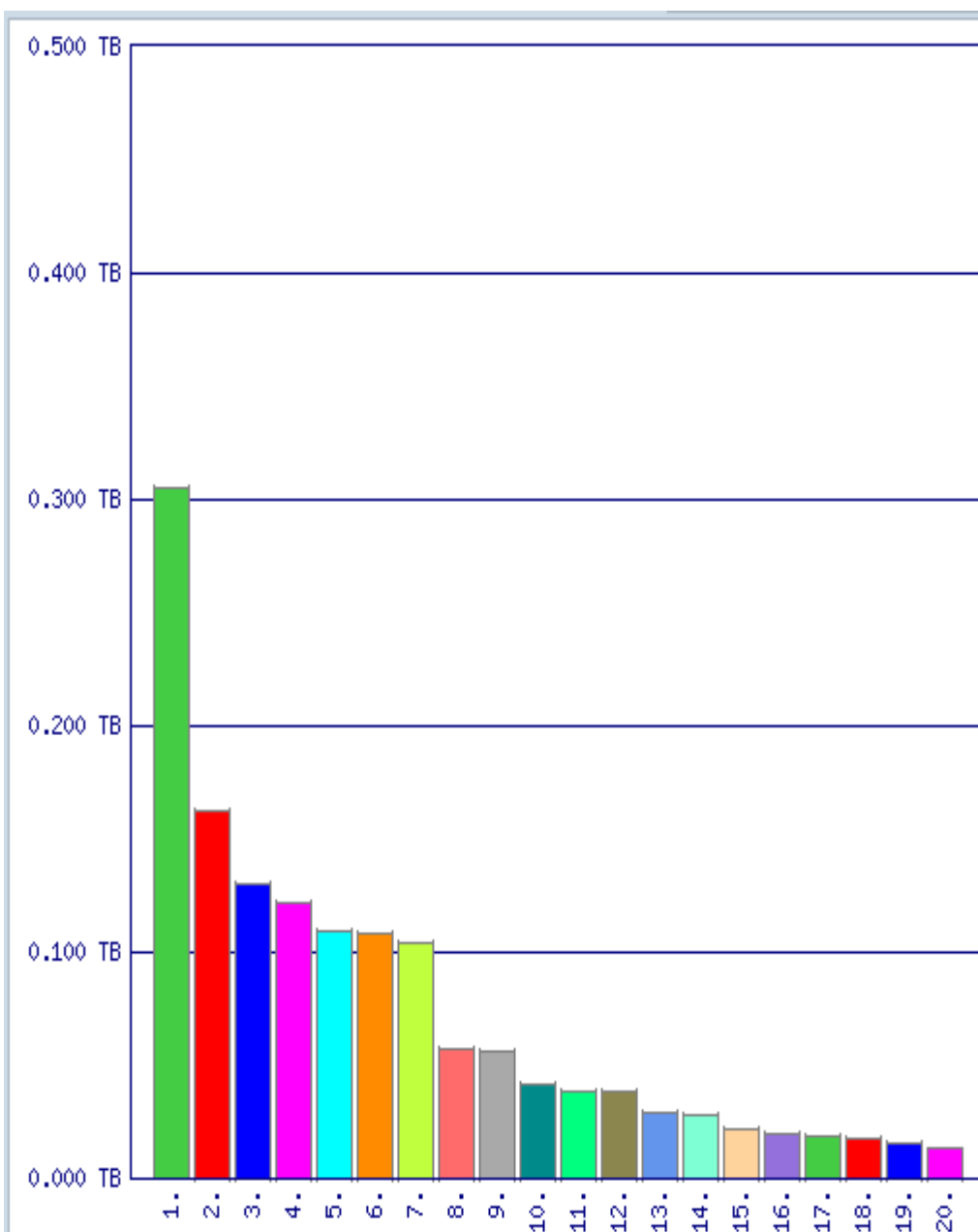
Summary

In graph	1.096 TB	71.27%
Rest of results	0.442 TB	28.73%
Total	1.538 TB	100.00%



	Src-IP	Dst-IP	Bytes-estimated	Src-Object	Dst-Object
0 >					
1 >			0.228 TB ~ 14.825%	Google	TUO Ostrava
2 >			136.048 GB ~ 8.637%	Google	VUT Brno
3 >			98.697 GB ~ 6.266%	Google	UK Praha
4 >			83.305 GB ~ 5.288%	Google	VSE Praha
5 >			83.136 GB ~ 5.278%	NIX.cz at r114	VUT Brno
6 >			72.832 GB ~ 4.624%	GEANT2 IP at r115	CVUT Praha
7 >			47.021 GB ~ 2.985%	AMS-IX peering at r115	VUT Brno
8 >	2001:638:902:1:0:0:0:11 6bone.informatik.uni-leipzig.de	2001:718:2:0:0:0:0:222 ftp.sh.cvut.cz	45.487 GB ~ 2.888%	GEANT2 IP at r115	CVUT Praha
9 >			45.014 GB ~ 2.858%	Google	TUL Liberec
10 >		2001:67c:1220:809:0:0:93e5:91e ftp6.fit.vutbr.cz, mlada.fit.vutbr.cz	42.410 GB ~ 2.692%	AMS-IX peering at r115	VUT Brno
11 >	2001:638:902:1:0:0:0:11 6bone.informatik.uni-leipzig.de	2001:67c:1220:809:0:0:93e5:91e ftp6.fit.vutbr.cz, mlada.fit.vutbr.cz	41.358 GB ~ 2.626%	GEANT2 IP at r115	VUT Brno
12 >			31.739 GB ~ 2.015%	NIX.cz at r114	TUO Ostrava
13 >			30.151 GB ~ 1.914%	Google	CVUT Praha
14 >			24.177 GB ~ 1.535%	NIX.cz at r114	UK Praha
15 >			23.312 GB ~ 1.480%	AMS-IX peering at r115	VSE Praha
16 >			22.460 GB ~ 1.426%	GEANT2 IP at r115	CESNET Praha
17 >			16.869 GB ~ 1.071%	Google	SLU Karvina
18 >			16.085 GB ~ 1.021%	AMS-IX peering at r115	CVUT Praha
19 >			15.108 GB ~ 0.959%	GEANT2 IP at r115	VUT Brno
20 >			14.000 GB ~ 0.889%	NIX.cz at r114	VSE Praha

IPv6 day – top „organizace/směr-organizace“



o	v	Bytes-estimated	Src-Organization	Dst-Organization
1.	v	0.304 TB ~ 19.794%	Google	VSB-TUO
2.	v	166.463 GB ~ 10.567%	Google	VUT
3.	v	133.612 GB ~ 8.482%	GEANT2 IP Service	CVUT
4.	v	124.830 GB ~ 7.924%	Google	UK
5.	v	111.661 GB ~ 7.088%	Google	VSE
6.	v	110.908 GB ~ 7.041%	AMS-IX peering	VUT
7.	v	106.513 GB ~ 6.762%	NIX.cz	VUT
8.	v	58.826 GB ~ 3.734%	GEANT2 IP Service	VUT
9.	v	58.044 GB ~ 3.685%	Google	TUL
10.	v	42.942 GB ~ 2.726%	AMS-IX peering	VSE
11.	v	39.208 GB ~ 2.489%	Google	CVUT
12.	v	38.927 GB ~ 2.471%	NIX.cz	VSB-TUO
13.	v	29.362 GB ~ 1.864%	AMS-IX peering	UK
14.	v	29.123 GB ~ 1.849%	NIX.cz	UK
15.	v	22.511 GB ~ 1.429%	GEANT2 IP Service	CESNET
16.	v	19.972 GB ~ 1.268%	Google	SLU
17.	v	19.134 GB ~ 1.215%	AMS-IX peering	CVUT
18.	v	17.834 GB ~ 1.132%	NIX.cz	VSE
19.	v	16.245 GB ~ 1.031%	NIX.cz	CVUT
20.	v	13.322 GB ~ 0.846%	Google	MU

IPv6 ve VI CESNET

- **1. 6. 2011 - 31. 10. 2011**

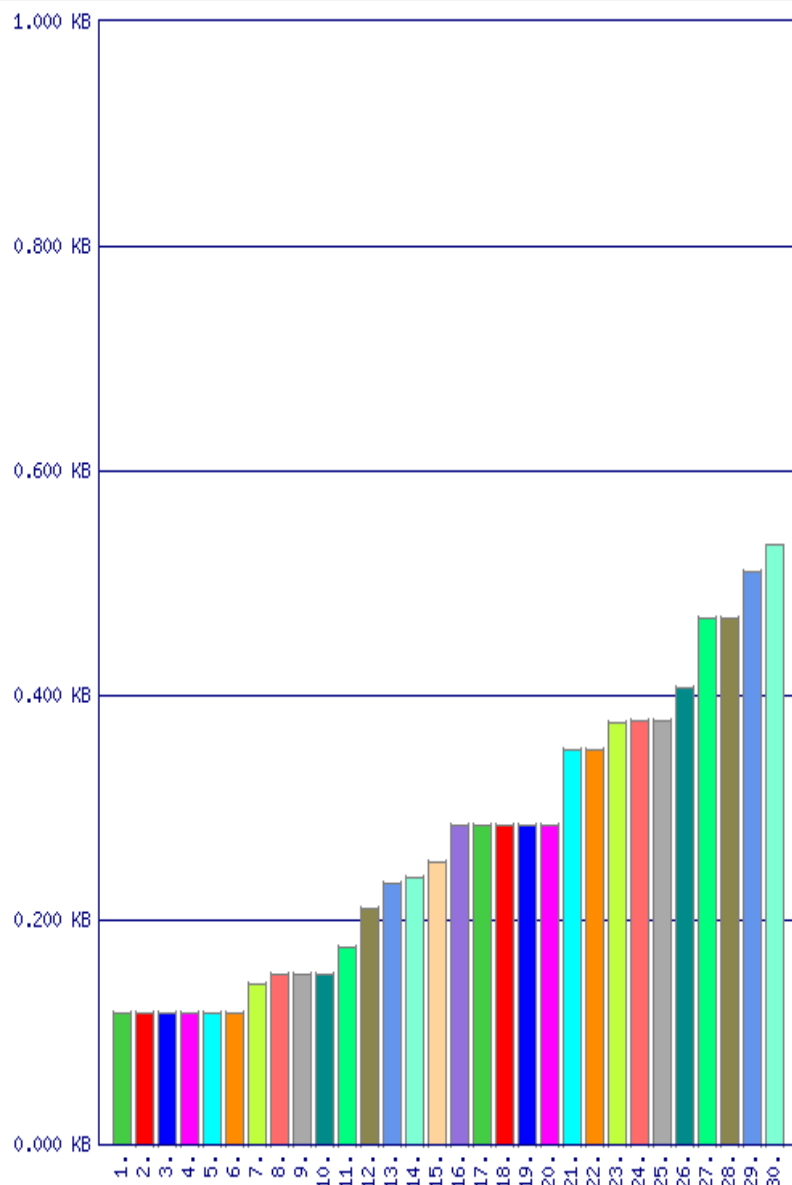
- **620** IPv6 64bit prefixů identifikovaných ze zdrojové IP adresy toku

...nekoresponduje vždy s reálným použitím...

IPv6 ve VI CESNET – top list - nejméně významné

Summary

In graph	0.000 TB	0.00%
Rest of results	47.579 TB	100.00%
Total	47.579 TB	100.00%

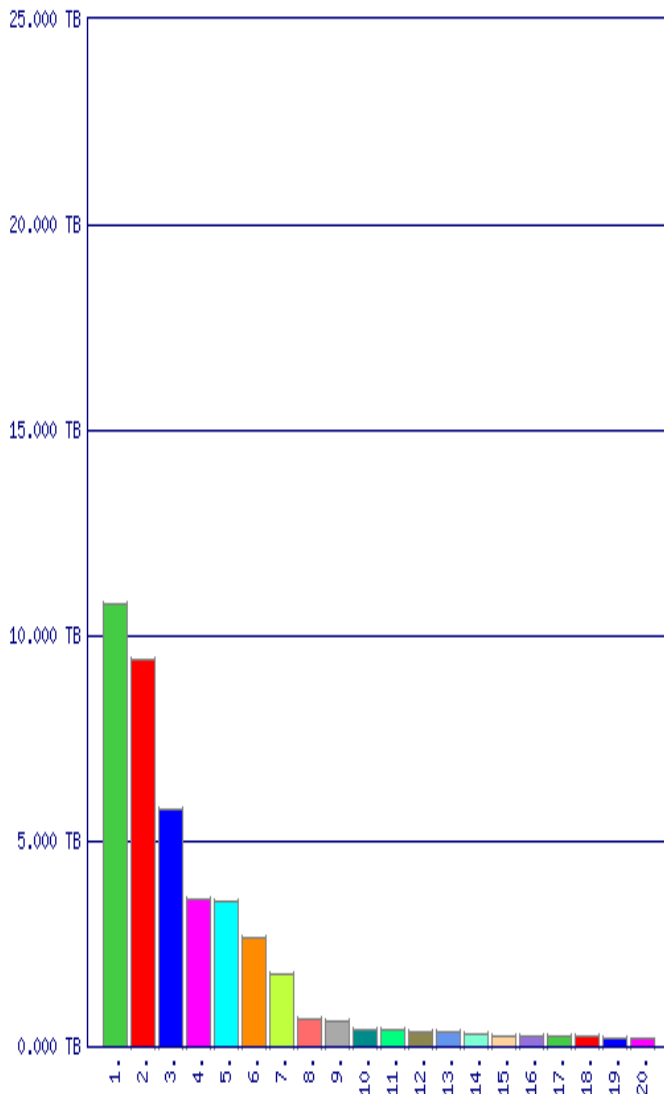


#	Src-IP	Bytes-estimated	Src-Object	Src-Organization
1.	2001:718:7:e204:0:0:0:0	120.000 B	CESNET2	CESNET2
2.	2001:718:1203:25e:0:0:0:0	120.000 B	CESNET2	CESNET2
3.	2001:718:7:2ac:0:0:0:0	120.000 B	CESNET2	CESNET2
4.	2001:718:1203:446:0:0:0:0	120.000 B	CESNET2	CESNET2
5.	2001:718:87:c8aa:0:0:0:0	120.000 B	CESNET2	CESNET2
6.	2001:718:120f:8247:0:0:0:0	120.000 B	CESNET2	CESNET2
7.	2001:718:1e03:aed1:0:0:0:0	146.000 B	AMS-IX peering at r115	AMS-IX peering
8.	2001:718:0:801:0:0:0:0	156.000 B	CESNET Praha	CESNET
9.	2001:718:0:2a01:0:0:0:0	156.000 B	CESNET Praha	CESNET
10.	2001:718:0:1e01:0:0:0:0	156.000 B	CESNET Praha	CESNET
11.	2001:718:400c:1:0:0:0:0	180.000 B	CESNET2	CESNET2
12.	2001:718:2202:a5e0:0:0:0:0	0.211 KB	CESNET2	CESNET2
13.	2001:718:2601:3df:0:0:0:0	0.232 KB	AMS-IX peering at r115	AMS-IX peering
14.	2001:67c:1220:4848:0:0:0:0	0.238 KB	AMS-IX peering at r115	AMS-IX peering
15.	2001:718:0:c000:0:0:0:0	0.252 KB	GEANT2 IP at r115	GEANT2 IP Service
16.	2001:718:1801:ac45:0:0:0:0	0.284 KB	ZCU Plzen	ZCU
17.	2001:718:1801:90c3:0:0:0:0	0.284 KB	ZCU Plzen	ZCU
18.	2001:718:1801:9301:0:0:0:0	0.284 KB	ZCU Plzen	ZCU
19.	2001:718:1801:8577:0:0:0:0	0.284 KB	ZCU Plzen	ZCU
20.	2001:718:1801:0:0:0:0:0	0.284 KB	ZCU Plzen	ZCU
21.	2001:718:2601:325:0:0:0:0	0.352 KB	AMS-IX peering at r115	AMS-IX peering
22.	2001:718:2:e3:0:0:0:0	0.352 KB	CVUT Praha	CVUT
23.	2001:718:1e02:162:0:0:0:0	0.375 KB	VSE Praha	VSE
24.	2001:718:410a:20:0:0:0:0	0.378 KB	CESNET2	CESNET2
25.	2001:718:90c6:fc00:0:0:0:0	0.378 KB	CESNET2	CESNET2
26.	2001:718:1005:110:0:0:0:0	0.407 KB	AMS-IX peering at r115	AMS-IX peering
27.	2001:718:1801:1254:0:0:0:0	0.469 KB	ZCU Plzen	ZCU
28.	2001:718:1e02:26:0:0:0:0	0.469 KB	VSE Praha	VSE
29.	2001:718:601:100:0:0:0:0	0.510 KB	Pardubice MAN	CESNET2
30.	2001:718:1e02:8144:0:0:0:0	0.533 KB	public Internet via Telia at r114	public Internet

IPv6 ve VI CESNET – top list - nejvýznamnější

Summary

In graph	42.133 TB	88.55%
Rest of results	5.445 TB	11.45%
Total	47.579 TB	100.00%



	>	Src-IP	Bytes-estimated	Flow-Data-Source	Src-Object	Src-Organization
1.	>	2001:718:1e03:801:0:0:0:0	10.773 TB	Prague 2: R114 - border router (NIX-3, Public Internet backup)(398)	UK Praha	UK
2.	>	2001:718:1:14:0:0:0:0	9.440 TB	Prague: R112(389)	CESNET Praha	CESNET
3.	>	2001:67c:1220:809:0:0:0:0	5.799 TB	Brno 2: R121 - border router (ACONET, VIX)(390)	VUT Brno	VUT
4.	>	2001:718:2:0:0:0:0:0	3.613 TB	Prague: R92(22)	CVUT Praha	CVUT
5.	>	2001:718:801:230:0:0:0:0	3.553 TB	Brno 1: R98 - border router (SANET, SIX)(29)	MU Brno	MU
6.	>	2001:718:1:4:0:0:0:0	2.641 TB	Prague: R112(389)	CESNET Praha	CESNET
7.	>	2001:718:1:a100:0:0:0:0	1.761 TB	Prague: R112(389)	CESNET Praha	CESNET
8.	>	2001:718:1e02:9096:0:0:0:0	0.659 TB	Prague 2: R114 - border router (NIX-3, Public Internet backup)(398)	VSE Praha	VSE
9.	>	2001:718:1e02:8144:0:0:0:0	0.631 TB	Prague 2: R114 - border router (NIX-3, Public Internet backup)(398)	VSE Praha	VSE
10.	>	2001:718:2:81:0:0:0:0	0.435 TB	Prague: R92(22)	CVUT Praha	CVUT
11.	>	2001:718:800:ffff:0:0:0:0	0.393 TB	Brno 1: R98 - border router (SANET, SIX)(29)	Brno MAN	CESNET2
12.	>	2001:718:1e03:5166:0:0:0:0	0.373 TB	Prague 2: R114 - border router (NIX-3, Public Internet backup)(398)	UK Praha	UK
13.	>	2001:718:1e03:801:0:0:0:0	0.365 TB	unresolved (808452096)	UK Praha	UK
14.	>	2001:718:1:7:0:0:0:0	0.294 TB	Prague: R112(389)	CESNET Praha	CESNET
15.	>	2001:718:1e02:9102:0:0:0:0	0.266 TB	Prague 2: R114 - border router (NIX-3, Public Internet backup)(398)	VSE Praha	VSE
16.	>	2001:718:1001:700:0:0:0:0	0.258 TB	Ostrava: R96 - border router (PIONIER)(55)	TUO Ostrava	VSb-TUO
17.	>	2001:718:1:101:0:0:0:0	0.250 TB	Prague: R112(389)	CESNET Praha	CESNET
18.	>	2001:718:1001:149:0:0:0:0	0.246 TB	Ostrava: R96 - border router (PIONIER)(55)	TUO Ostrava	VSb-TUO
19.	>	2001:718:1e03:5165:0:0:0:0	204.138 GB	Prague 2: R114 - border router (NIX-3, Public Internet backup)(398)	UK Praha	UK
20.	>	2001:718:1:14:0:0:0:0	189.963 GB	Brno 2: R121 - border router (ACONET, VIX)(390)	CESNET Praha	CESNET

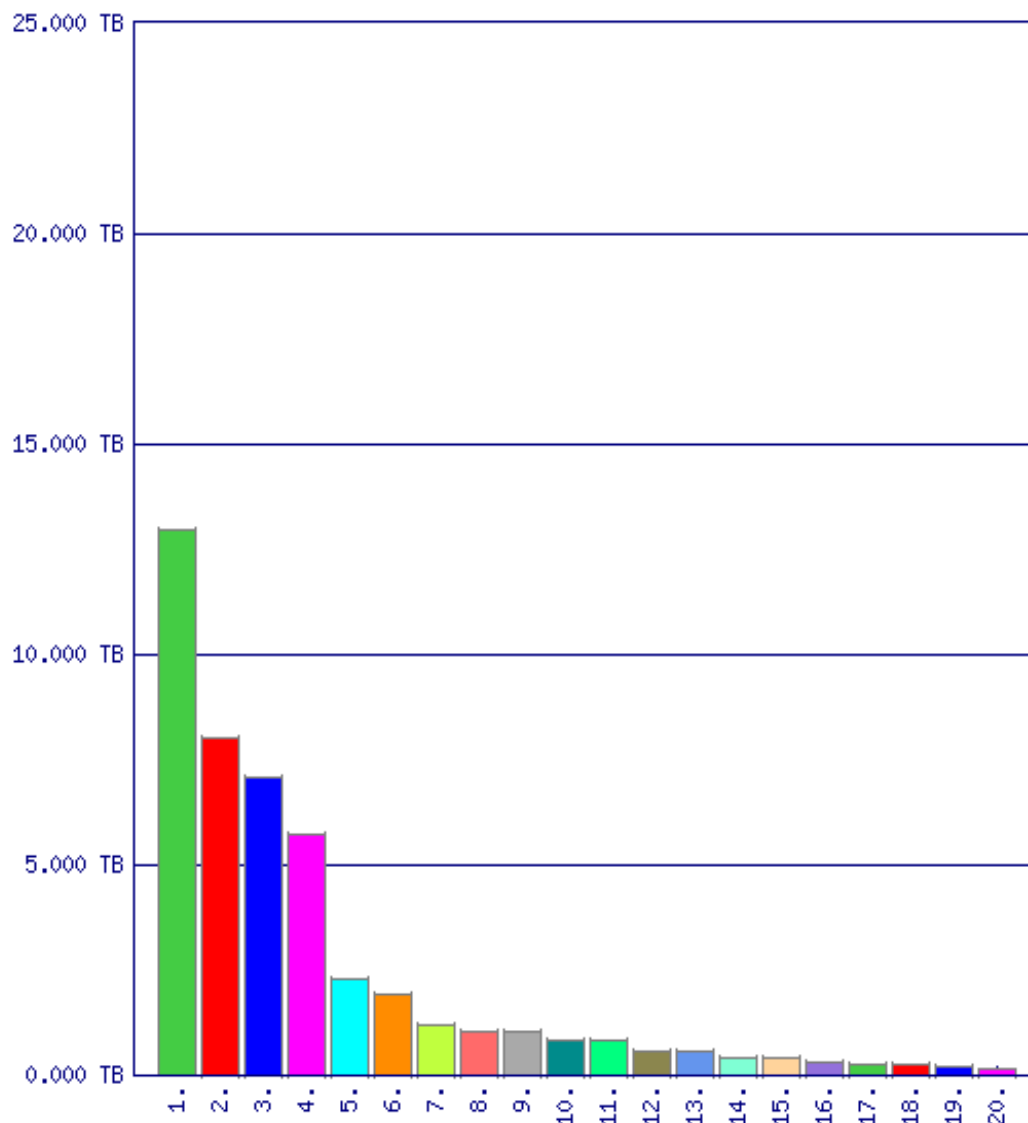
IPv6 ve VI CESNET

- **Říjen 2011**
- příchozí provoz z míst mimo komunitu VI CESNET
- relativně přesné vymezení

IPv6 ve VI CESNET - příchozí, říjen 2011, organizační pohled

Summary

In graph	46.150 TB	95.12%
Rest of results	2.366 TB	4.88%
Total	48.516 TB	100.00%

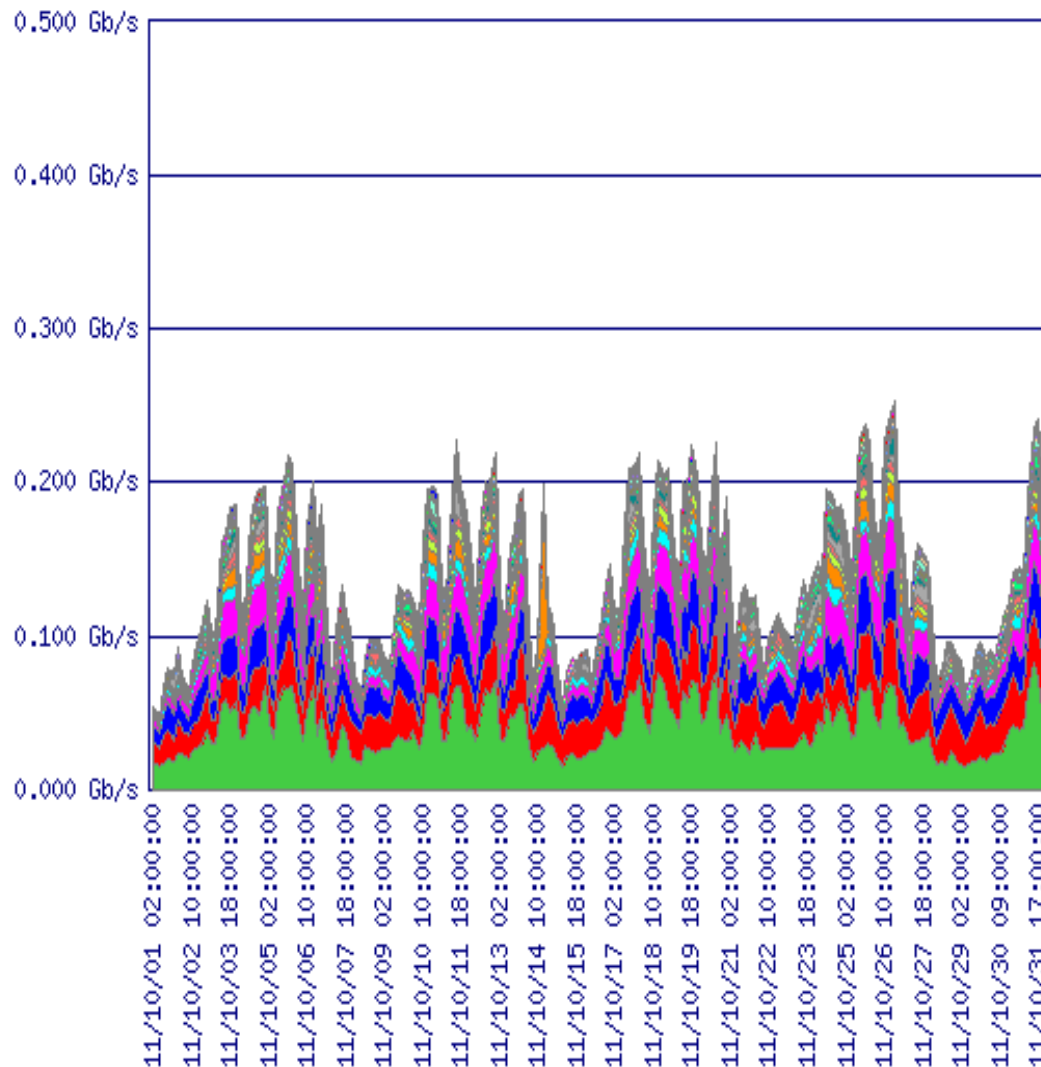
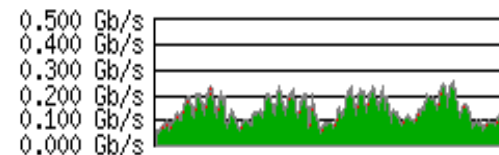


		<i>Bytes-estimated</i>	<i>Src-Organization</i>	<i>Dst-Object</i>
1.		12.978 TB ~ 26.750%	Google	VUT Brno
2.		7.991 TB ~ 16.472%	Google	UK Praha
3.		7.055 TB ~ 14.542%	Google	VSE Praha
4.		5.722 TB ~ 11.793%	Google	TUO Ostrava
5.		2.268 TB ~ 4.676%	Google	CVUT Praha
6.		1.945 TB ~ 4.009%	NIX.cz	VUT Brno
7.		1.220 TB ~ 2.514%	Google	SLU Karvina
8.		1.042 TB ~ 2.148%	NIX.cz	VSE Praha
9.		1.016 TB ~ 2.094%	AMS-IX peering	VUT Brno
10.		0.850 TB ~ 1.751%	NIX.cz	TUO Ostrava
11.		0.811 TB ~ 1.671%	NIX.cz	UK Praha
12.		0.582 TB ~ 1.200%	Google	TUL Liberec
13.		0.559 TB ~ 1.152%	Google	MU Brno
14.		0.428 TB ~ 0.883%	GEANT2 IP Service	CVUT Praha
15.		0.418 TB ~ 0.862%	AMS-IX peering	VSE Praha
16.		0.337 TB ~ 0.694%	AMS-IX peering	TUO Ostrava
17.		0.280 TB ~ 0.577%	NIX.cz	CVUT Praha
18.		0.267 TB ~ 0.550%	GEANT2 IP Service	VUT Brno
19.		0.203 TB ~ 0.418%	NIX.cz	TUL Liberec
20.		182.931 GB ~ 0.368%	Google	CESNET2

IPv6 ve VI CESNET - příchozí, říjen 2011, organizační pohled

Summary

In graph	46.150 TB	95.12%
Rest of results	2.366 TB	4.88%
Total	48.516 TB	100.00%

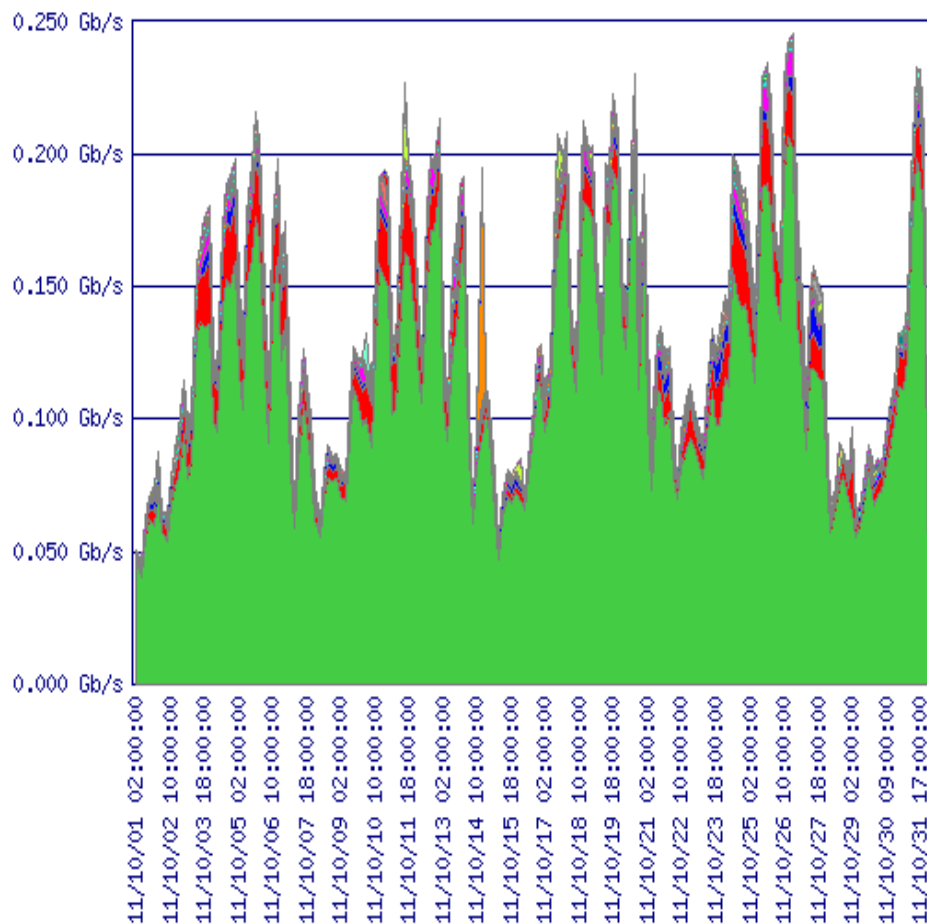
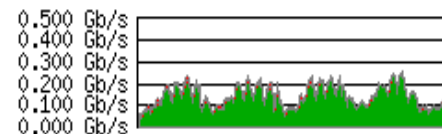


	<i>Bytes-estimated</i>	<i>Src-Organization</i>	<i>Dst-Object</i>
0			
1	12.978 TB ~ 26.750%	Google	VUT Brno
2	7.991 TB ~ 16.472%	Google	UK Praha
3	7.055 TB ~ 14.542%	Google	VSE Praha
4	5.722 TB ~ 11.793%	Google	TUO Ostrava
5	2.268 TB ~ 4.676%	Google	CVUT Praha
6	1.945 TB ~ 4.009%	NIX.cz	VUT Brno
7	1.220 TB ~ 2.514%	Google	SLU Karvina
8	1.042 TB ~ 2.148%	NIX.cz	VSE Praha
9	1.016 TB ~ 2.094%	AMS-IX peering	VUT Brno
10	0.850 TB ~ 1.751%	NIX.cz	TUO Ostrava
11	0.811 TB ~ 1.671%	NIX.cz	UK Praha
12	0.582 TB ~ 1.200%	Google	TUL Liberec
13	0.559 TB ~ 1.152%	Google	MU Brno
14	0.428 TB ~ 0.883%	GEANT2 IP Service	CVUT Praha
15	0.418 TB ~ 0.862%	AMS-IX peering	VSE Praha
16	0.337 TB ~ 0.694%	AMS-IX peering	TUO Ostrava
17	0.280 TB ~ 0.577%	NIX.cz	CVUT Praha
18	0.267 TB ~ 0.550%	GEANT2 IP Service	VUT Brno
19	0.203 TB ~ 0.418%	NIX.cz	TUL Liberec
20	182.931 GB ~ 0.368%	Google	CESNET2

IPv6 ve VI CESNET - příchozí, říjen 2011, zdrojové IP

Summary

In graph	45.199 TB	93.16%
Rest of results	3.318 TB	6.84%
Total	48.516 TB	100.00%

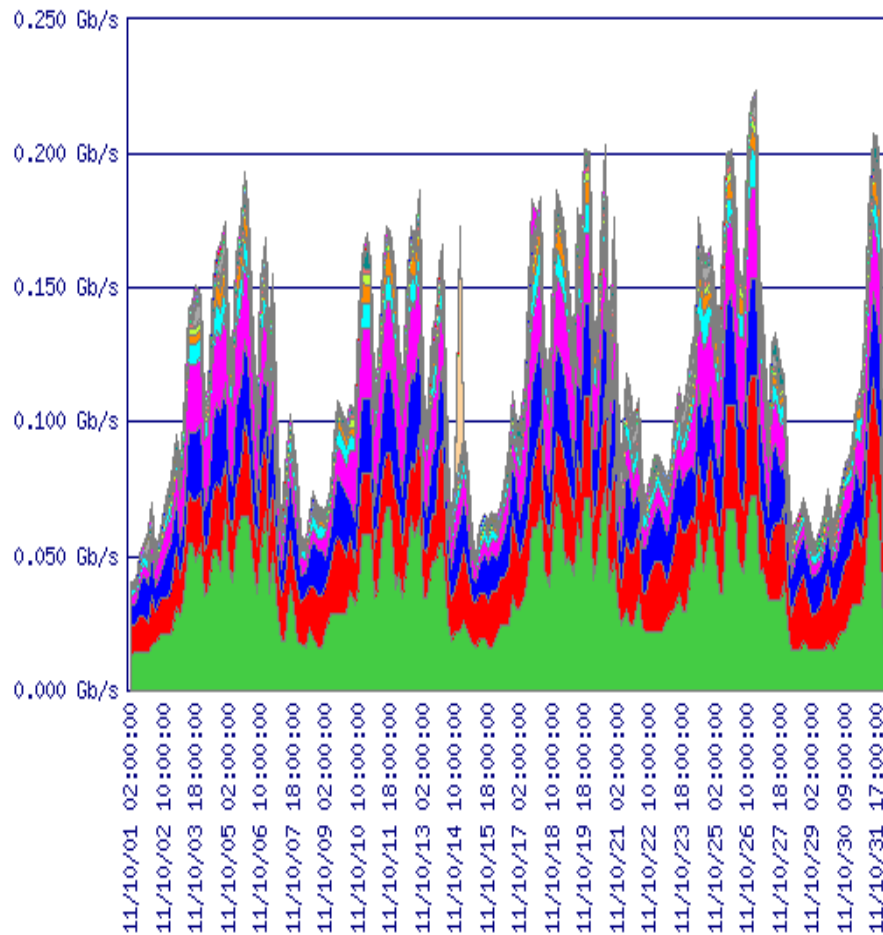
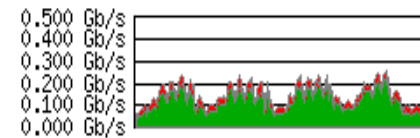


	Src-IP	Bytes-estimated	Src-Organization
0			
1		37.470 TB ~ 77.231%	Google
2		3.756 TB ~ 7.743%	NIX.cz
3		1.099 TB ~ 2.266%	AMS-IX peering
4	2a01:430:6:6272:616d:0:6e:6472 ndr.anafra.net	0.818 TB ~ 1.687%	NIX.cz
5		0.467 TB ~ 0.962%	GEANT2 IP Service
6	2001:1488:d91f:cd78:0:0:0:7c	0.285 TB ~ 0.586%	NIX.cz
7	2001:67c:174:101:0:0:0:1337	0.214 TB ~ 0.441%	AMS-IX peering
8	2001:610:1:80aa:192:87:102:43 ftp.surfnet.nl	132.869 GB ~ 0.267%	GEANT2 IP Service
9	2001:638:902:1:0:0:0:11 6bone.informatik.uni-leipzig.de	129.864 GB ~ 0.261%	GEANT2 IP Service
10	2a02:1d0:7:0:5027:9bcd:cb8e:5598	128.216 GB ~ 0.258%	NIX.cz
11	2001:610:1:80aa:192:87:102:42 ftp.surfnet.nl	114.974 GB ~ 0.231%	GEANT2 IP Service
12	2001:6c8:2:600:0:0:0:132 ftp.beastie.tdk.net	104.644 GB ~ 0.211%	AMS-IX peering
13		83.556 GB ~ 0.168%	public Internet
14	2001:6b0:e:2018:0:0:0:165 hammurabi.acc.umu.se	75.261 GB ~ 0.151%	GEANT2 IP Service
15	2001:67c:68:0:0:0:0:6f	73.496 GB ~ 0.148%	NIX.cz
16	2a02:1d0:3:0:20c:29ff:fe6a:796e	61.653 GB ~ 0.124%	NIX.cz
17	2002:c371:e4f6:0:0:0:c371:e4f6	59.056 GB ~ 0.119%	AMS-IX peering
18	2a01:430:1a:0:0:0:0:220	57.385 GB ~ 0.116%	NIX.cz
19	2001:b68:ff:1:0:0:0:11 mirror.CARNet.hr	53.844 GB ~ 0.108%	GEANT2 IP Service
20	2001:470:1f0b:13d2:0:0:0:49	41.327 GB ~ 0.083%	AMS-IX peering

IPv6 ve VI CESNET - příchozí, říjen 2011, cílové IP

Summary

In graph	39.282 TB	80.97%
Rest of results	9.234 TB	19.03%
Total	48.516 TB	100.00%



	<i>Dst-IP</i>	<i>Bytes-estimated</i>	<i>Dst-Object</i>
0			
1		12.505 TB ~ 25.775%	VUT Brno
2		7.458 TB ~ 15.372%	UK Praha
3		6.985 TB ~ 14.397%	VSE Praha
4		5.749 TB ~ 11.849%	TUO Ostrava
5		2.216 TB ~ 4.567%	CVUT Praha
6		1.239 TB ~ 2.554%	SLU Karvina
7		0.643 TB ~ 1.325%	TUL Liberec
8		0.421 TB ~ 0.868%	MU Brno
9	2001:67c:1220:809:0:0:93e5:91e ftp6.fit.vutbr.cz, mlada.fit.vutbr.cz	0.389 TB ~ 0.802%	VUT Brno
10	2001:718:2:0:0:0:0:222 ftp.sh.cvut.cz	0.350 TB ~ 0.722%	CVUT Praha
11		0.204 TB ~ 0.421%	CESNET2
12	2001:718:801:230:0:0:0:8c pyrrha.ip6.fi.muni.cz	197.809 GB ~ 0.398%	MU Brno
13		195.567 GB ~ 0.394%	CESNET Praha
14		192.350 GB ~ 0.387%	ZCU Plzen
15	2001:67c:1220:8b0:0:0:93e5:b013 merlin6.fit.vutbr.cz	163.404 GB ~ 0.329%	VUT Brno
16		156.200 GB ~ 0.314%	UK Marianske Lazne
17	2001:67c:1220:809:0:0:93e5:90e cache6.fit.vutbr.cz	81.423 GB ~ 0.164%	VUT Brno
18		56.286 GB ~ 0.113%	UK Hradec Kralove
19	2001:718:1:4:211:43ff:fedf:8b79	53.831 GB ~ 0.108%	CESNET Praha
20	2001:67c:1220:c1b2:f24d:a2ff:fecl:361f	53.536 GB ~ 0.108%	VUT Brno

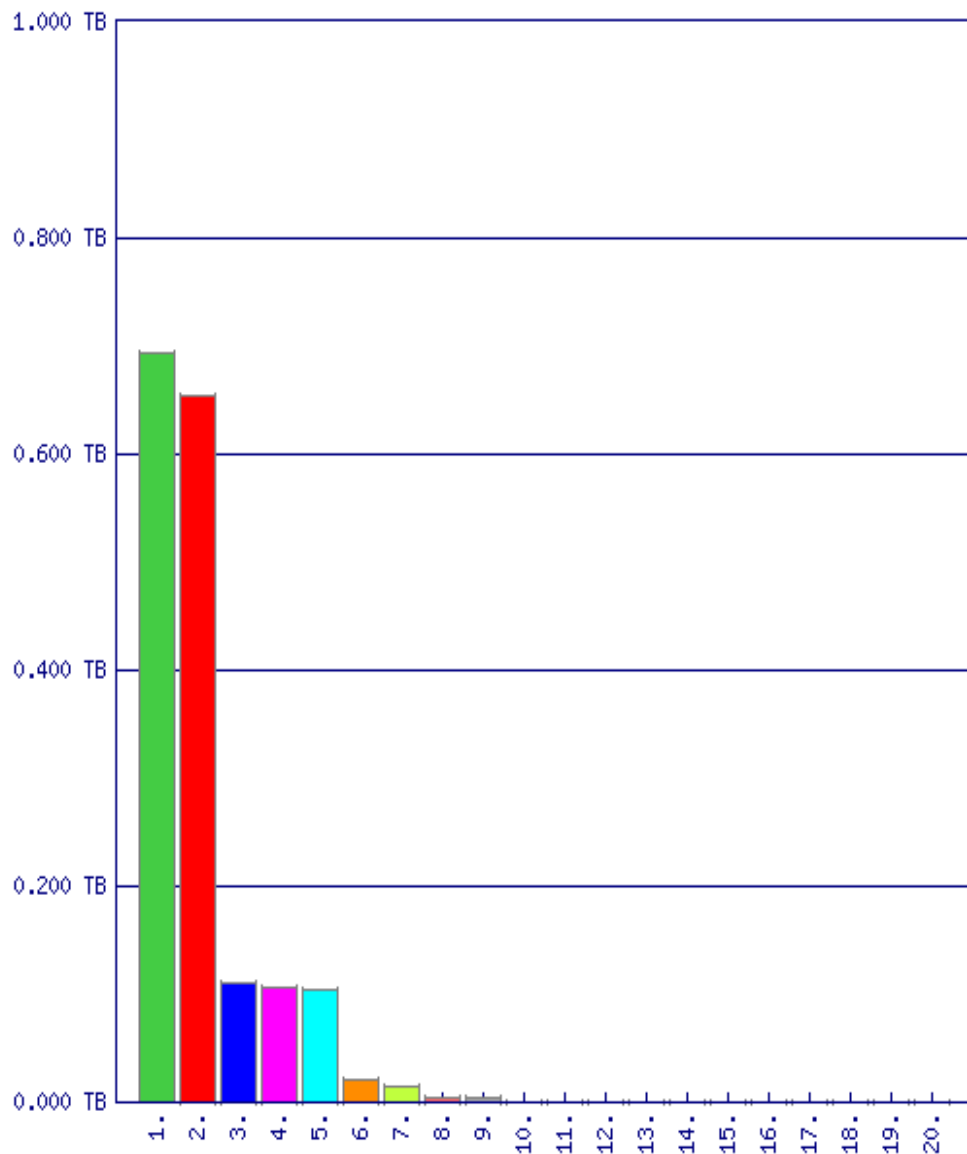
IPv6 ve VI CESNET

- **Říjen 2011**
- odchozí provoz do míst mimo komunitu VI CESNET
- relativně přesné vymezení

IPv6 ve VI CESNET - odchozí, říjen 2011, organizační pohled

Summary

In graph	1.716 TB	100.00%
Rest of results	0.000 TB	0.00%
Total	1.716 TB	100.00%

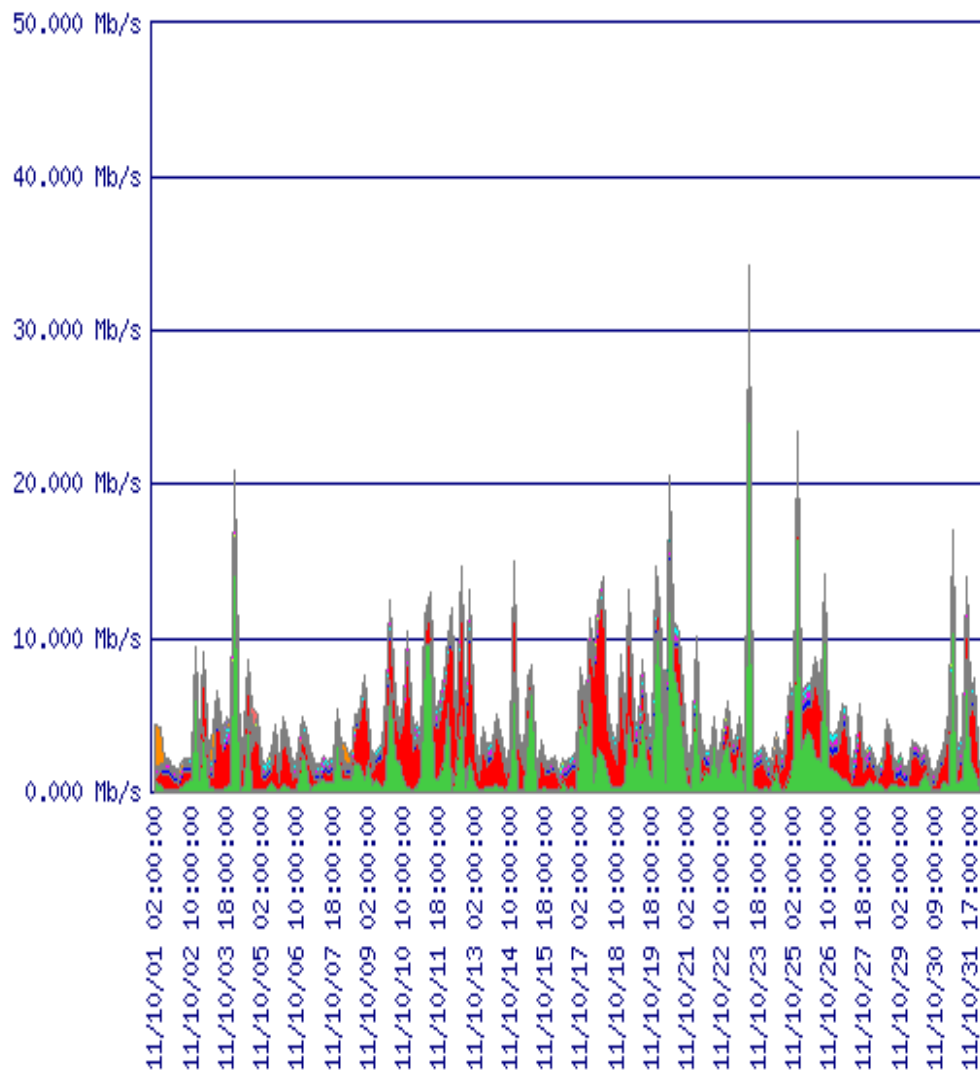
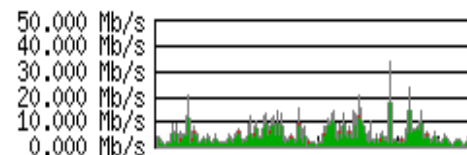


#	>	Bytes-estimated	Src-Object	Dst-Organization
1.	>	0.693 TB ~ 40.362%	UK Praha	NIX.cz
2.	>	0.654 TB ~ 38.120%	VSE Praha	NIX.cz
3.	>	113.757 GB ~ 6.473%	UK Praha	Google
4.	>	108.658 GB ~ 6.183%	VSE Praha	Google
5.	>	107.356 GB ~ 6.109%	VUT Brno	Google
6.	>	21.367 GB ~ 1.216%	MU Brno	ACONET, VIX peering
7.	>	14.755 GB ~ 0.840%	MU Brno	Google
8.	>	4.328 GB ~ 0.246%	MU Brno	SANET, SIX peering
9.	>	3.292 GB ~ 0.187%	UK Mariánské Lázně	Google
10.	>	0.992 GB ~ 0.056%	CESNET Praha	NIX.cz
11.	>	0.965 GB ~ 0.055%	AVU Praha	NIX.cz
12.	>	0.818 GB ~ 0.047%	CESNET Praha	AMS-IX peering
13.	>	0.571 GB ~ 0.033%	PASNET backbone	NIX.cz
14.	>	0.395 GB ~ 0.022%	CESNET Praha	GEANT2 IP Service
15.	>	0.382 GB ~ 0.022%	CAS PASNET IPv6	NIX.cz
16.	>	0.250 GB ~ 0.014%	CAS PASNET IPv6	Google
17.	>	192.943 MB ~ 0.011%	CESNET2	Google
18.	>	75.517 MB ~ 0.004%	PASNET backbone	Google
19.	>	28.033 MB ~ 0.002%	UIV Praha	NIX.cz
20.	>	1.023 MB ~ 0.000%	CESNET Praha	Google

IPv6 ve VI CESNET - odchozí, říjen 2011, organizační pohled

Summary

In graph	1.716 TB	100.00%
Rest of results	0.000 TB	0.00%
Total	1.716 TB	100.00%

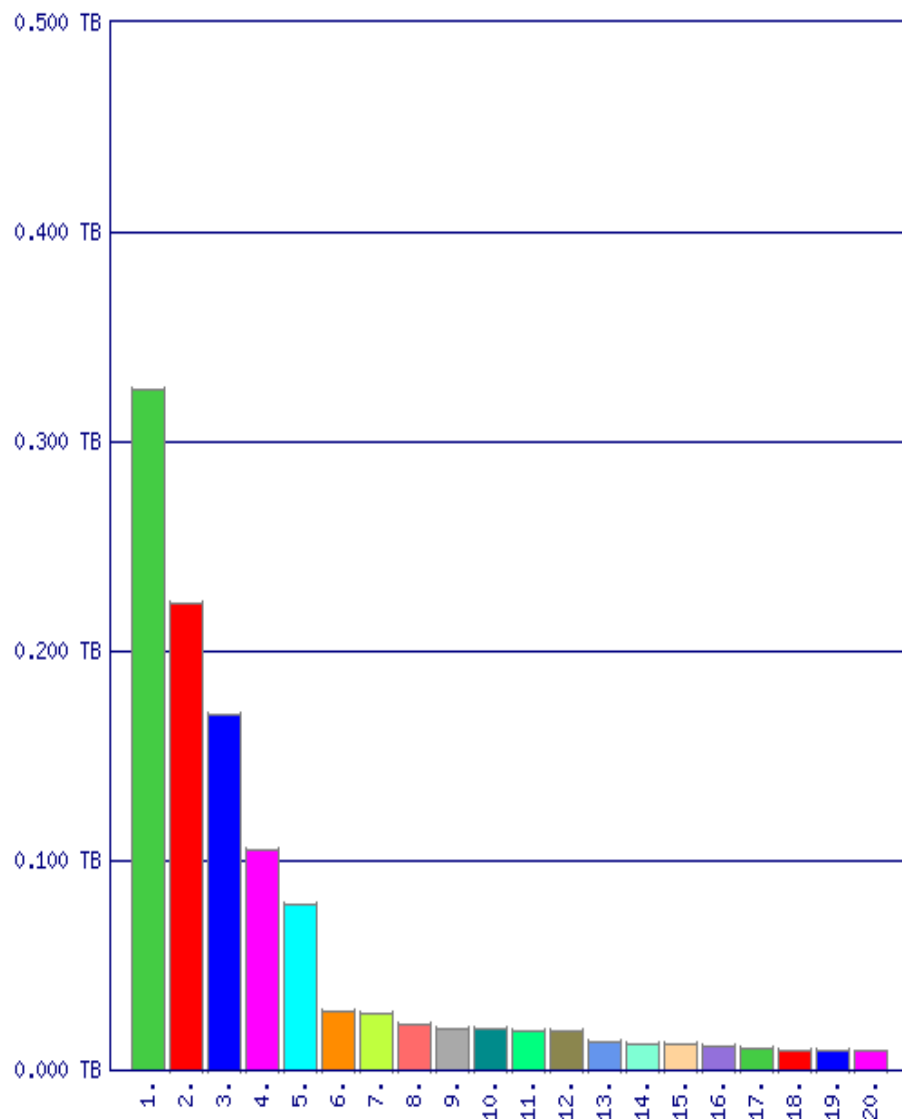


#	Color	Bytes-estimated	Src-Object	Dst-Organization
1.	Green	0.693 TB ~ 40.362%	UK Praha	NIX.cz
2.	Red	0.654 TB ~ 38.120%	VSE Praha	NIX.cz
3.	Blue	113.757 GB ~ 6.473%	UK Praha	Google
4.	Magenta	108.658 GB ~ 6.183%	VSE Praha	Google
5.	Cyan	107.356 GB ~ 6.109%	VUT Brno	Google
6.	Orange	21.367 GB ~ 1.216%	MU Brno	ACONET, VIX peering
7.	Light Green	14.755 GB ~ 0.840%	MU Brno	Google
8.	Red-Orange	4.328 GB ~ 0.246%	MU Brno	SANET, SIX peering
9.	Grey	3.292 GB ~ 0.187%	UK Marianske Lazne	Google
10.	Dark Green	0.992 GB ~ 0.056%	CESNET Praha	NIX.cz
11.	Bright Green	0.965 GB ~ 0.055%	AVU Praha	NIX.cz
12.	Brown	0.818 GB ~ 0.047%	CESNET Praha	AMS-IX peering
13.	Blue-White	0.571 GB ~ 0.033%	PASNET backbone	NIX.cz
14.	Light Blue	0.395 GB ~ 0.022%	CESNET Praha	GEANT2 IP Service
15.	Orange-White	0.382 GB ~ 0.022%	CAS PASNET IPv6	NIX.cz
16.	Purple	0.250 GB ~ 0.014%	CAS PASNET IPv6	Google
17.	Light Green	192.943 MB ~ 0.011%	CESNET2	Google
18.	Red	75.517 MB ~ 0.004%	PASNET backbone	Google
19.	Blue	28.033 MB ~ 0.002%	UV Praha	NIX.cz
20.	Magenta	1.023 MB ~ 0.000%	CESNET Praha	Google

IPv6 ve VI CESNET - odchozí, říjen 2011, zdrojové IP

Summary

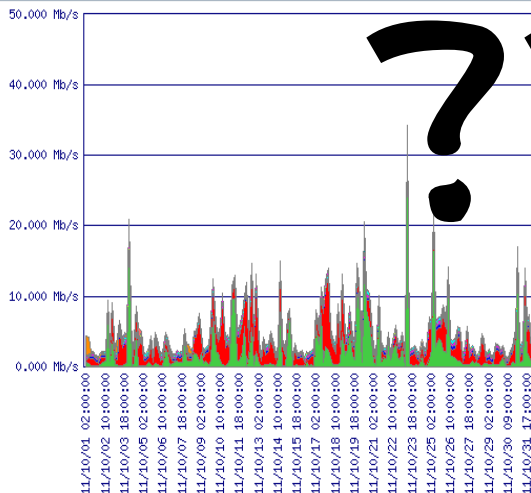
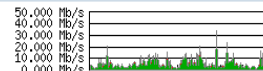
In graph	1.142 TB	66.55%
Rest of results	0.574 TB	33.45%
Total	1.716 TB	100.00%



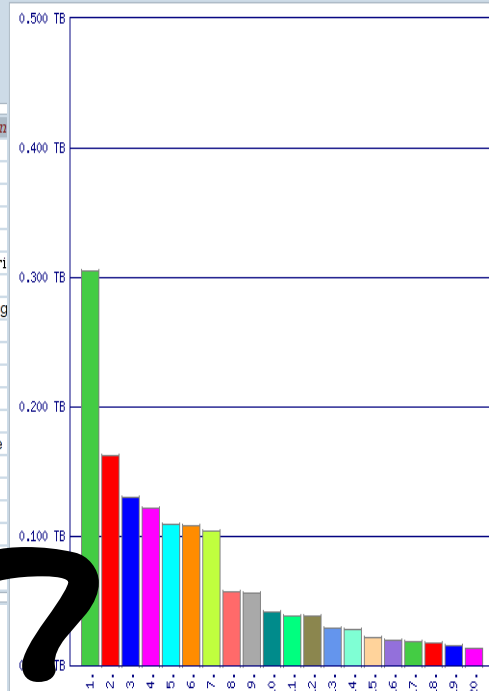
	Src-IP	Bytes-estimated	Src-Object	
0	>			
1.	2001:718:1e03:801:0:0:0:6 www.freebsd.cz	0.325 TB ~ 18.908%	UK Praha	
2.	>	0.223 TB ~ 12.975%	VSE Praha	
3.	>	173.794 GB ~ 9.889%	UK Praha	
4.	>	107.174 GB ~ 6.098%	VUT Brno	
5.	>	2001:718:1e03:5166:a05e:efb9:fa8b:9a24	81.157 GB ~ 4.618%	UK Praha
6.	>	2001:718:1e02:9096:1873:5c51:343f:f7c0	28.761 GB ~ 1.636%	VSE Praha
7.	>	2001:718:1e03:5166:1026:db0f:34f4:ad51	28.041 GB ~ 1.596%	UK Praha
8.	>	2001:718:1e02:9116:9422:7e5b:f9f:d5b2	22.675 GB ~ 1.290%	VSE Praha
9.	>	2001:718:1e03:5166:fdd9:9e3a:aba0:c758	20.497 GB ~ 1.166%	UK Praha
10.	>	2001:718:1e02:8144:d8cf:ee61:b769:645e	19.990 GB ~ 1.137%	VSE Praha
11.	>	2001:718:801:230:0:0:0:cd odysseus.ip6.fi.muni.cz	18.840 GB ~ 1.072%	MU Brno
12.	>	2001:718:1e03:5166:71d6:8431:80d7:539a	18.690 GB ~ 1.063%	UK Praha
13.	>	2001:718:1e03:5166:102b:cb51:8f03:e61d	13.971 GB ~ 0.795%	UK Praha
14.	>	2001:718:1e03:5166:84d8:9e95:385b:aeda	12.344 GB ~ 0.702%	UK Praha
15.	>	2001:718:1e02:9096:f98a:7b0c:aee3:8a31	12.260 GB ~ 0.698%	VSE Praha
16.	>		11.569 GB ~ 0.658%	MU Brno
17.	>	2001:718:1e03:5166:9528:4955:40d8:447d	10.966 GB ~ 0.624%	UK Praha
18.	>	2001:718:1e02:8144:4dac:ce17:b1d9:f39d	9.752 GB ~ 0.555%	VSE Praha
19.	>	2001:718:1e02:9096:794a:a8d7:6823:f032	9.511 GB ~ 0.541%	VSE Praha
20.	>	2001:718:1e02:8144:6400:cb15:93d3:277a	9.202 GB ~ 0.524%	VSE Praha

Summary

In graph 1.716 TB 100.00%
 Rest of results 0.000 TB 0.00%
 Total 1.716 TB 100.00%



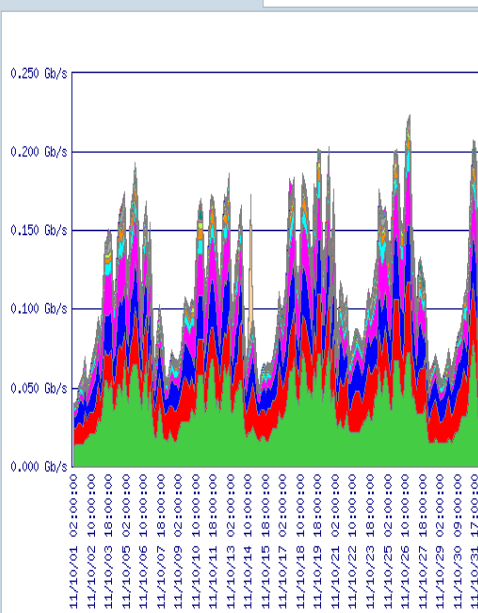
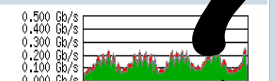
#	Bytes-estimated	Src-Object	Dst-Organization
1	93.37 GB ~ 5.43%	CESNET Praha	NIX.cz
2	1.954 TB ~ 38.120%	CESNET Praha	NIX.cz
3	3.757 GB ~ 6.473%	UK Praha	Google
4	108.658 GB ~ 6.15%	VSE Praha	Google
5	107.356 GB ~ 6.1%	VUT Brno	Google
6	21.367 GB ~ 1.216%	MU Brno	ACONET, VIX peering
7	14.755 GB ~ 0.840%	MU Brno	Google
8	4.328 GB ~ 0.25%	MU Brno	SANET, SIX peering
9	3.292 GB ~ 0.187%	UK Marianske Lazne	Google
10	0.992 GB ~ 0.056%	CESNET Praha	NIX.cz
11	0.965 GB ~ 0.055%	AVU Praha	NIX.cz
12	0.818 GB ~ 0.047%	CESNET Praha	AMS-IX peering
13	0.571 GB ~ 0.033%	PASNET backbone	NIX.cz
14	0.395 GB ~ 0.022%	CESNET Praha	GEANT2 IP Service
15	0.382 GB ~ 0.022%	CAS PASNET IPv6	NIX.cz
16	0.250 GB ~ 0.014%	CAS PASNET IPv6	Google
17	192.943 MB ~ 0.011%	CESNET2	Google
18	75.517 MB ~ 0.004%	PASNET backbone	Google
19	28.033 MB ~ 0.001%	CESNET Praha	Google
20	1.023 MB ~ 0.000%	CESNET Praha	Google



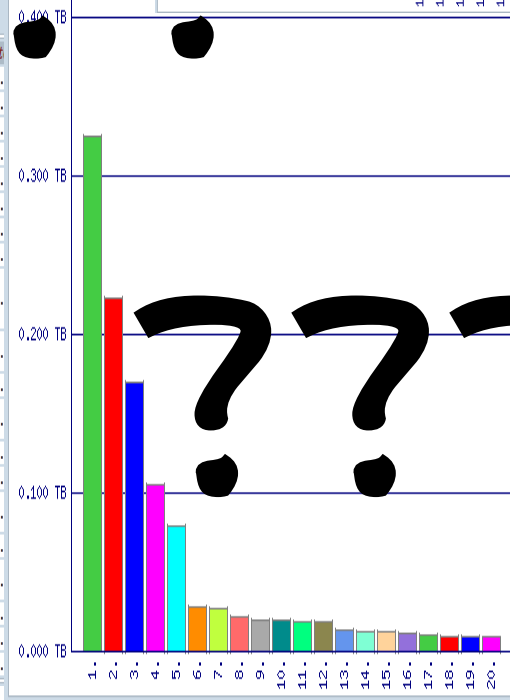
#	Bytes-estimated	Src-Organization	Dst-Organization
1	0.304 TB ~ 19.794%	Google	VSB-TUO
2	166.463 GB ~ 10.567%	Google	VUT
3	133.612 GB ~ 8.482%	GEANT2 IP Service	CVUT
4	124.830 GB ~ 7.924%	Google	UK
5	111.661 GB ~ 7.088%	Google	VSE
6	110.908 GB ~ 7.041%	AMS-IX peering	VUT
7	106.513 GB ~ 6.762%	NIX.cz	VUT
8	58.826 GB ~ 3.734%	GEANT2 IP Service	VUT
9	58.044 GB ~ 3.685%	Google	TUL
10	42.942 GB ~ 2.726%	AMS-IX peering	VSE
11	39.208 GB ~ 2.489%	Google	CVUT
12	38.927 GB ~ 2.471%	NIX.cz	VSB-TUO
13	29.362 GB ~ 1.864%	AMS-IX peering	UK
14	29.123 GB ~ 1.849%	NIX.cz	UK
15	22.511 GB ~ 1.429%	GEANT2 IP Service	CESNET
16	19.972 GB ~ 1.268%	Google	SLU
17	19.134 GB ~ 1.215%	AMS-IX peering	CVUT
18	17.834 GB ~ 1.132%	NIX.cz	VSE
19	16.245 GB ~ 1.031%	NIX.cz	CVUT
20	13.322 GB ~ 0.846%	Google	MU

Summary

In graph 39.282 TB 80.97%
 Rest of results 9.234 TB 19.03%
 Total 48.516 TB 100.00%



#	Dst-IP	Bytes-estimated
1		12.505 TB ~ 25.0%
2		7.458 TB ~ 15.0%
3		6.985 TB ~ 14.0%
4		5.749 TB ~ 11.0%
5		2.216 TB ~ 4.0%
6		1.239 TB ~ 2.0%
7		0.643 TB ~ 1.0%
8		0.421 TB ~ 0.5%
9	2001:67c:1220:809:0:0:93e5:91e ftp6.fit.vutbr.cz mlada.fit.vutbr.cz	0.389 TB ~ 0.5%
10	2001:718:2:0:0:0:222 ftp.sh.cvut.cz	0.350 TB ~ 0.5%
11		0.204 TB ~ 0.5%
12	2001:718:801:230:0:0:0:8c pyrrha.ip6.fi.muni.cz	197.809 GB ~ 0.5%
13		195.567 GB ~ 0.5%
14		192.350 GB ~ 0.5%
15	2001:67c:1220:8b0:0:0:93e5:b013 merlin6.fit.vutbr.cz	163.404 GB ~ 0.5%
16		156.200 GB ~ 0.5%
17	2001:67c:1220:809:0:0:93e5:90e cache6.fit.vutbr.cz	81.423 GB ~ 0.5%
18		56.286 GB ~ 0.5%
19	2001:718:1:4:211:43ff:fedf:8b79	53.831 GB ~ 0.5%
20	2001:67c:1220:c1b2:f24da2ff:fecl:361f	53.536 GB ~ 0.5%



1		0.223 TB ~ 12.975%	VSE Praha
2		173.794 GB ~ 9.889%	UK Praha
3		107.174 GB ~ 6.098%	VUT Brno
4		81.157 GB ~ 4.618%	UK Praha
5	2001:718:1e03:5166:a05:efb9:fa8b:9a24	28.761 GB ~ 1.636%	VSE Praha
6	2001:718:1e02:9096:1873:5c51:343f:7c0	28.041 GB ~ 1.596%	UK Praha
7	2001:718:1e03:5166:1026:db0f:34f4:ad51	22.675 GB ~ 1.290%	VSE Praha
8	2001:718:1e02:9116:9422:7e5b:f9f:ddb2	20.497 GB ~ 1.166%	UK Praha
9	2001:718:1e03:5166:fdd9:9e3a:aba0:c758	19.990 GB ~ 1.137%	VSE Praha
10	2001:718:1e02:8144:d8cf:ee61:b769:645e	18.840 GB ~ 1.072%	MU Brno
11	2001:718:801:230:0:0:0:cd odysseus.ip6.fi.muni.cz	18.690 GB ~ 1.063%	UK Praha
12	2001:718:1e03:5166:71d6:8431:80d7:539a	13.971 GB ~ 0.795%	UK Praha
13	2001:718:1e03:5166:102b:cb51:8f03:e61d	12.344 GB ~ 0.702%	UK Praha
14	2001:718:1e03:5166:84d8:9e95:385:baeda	12.260 GB ~ 0.698%	VSE Praha
15	2001:718:1e02:9096:f98a:7b0c:ae3:8a31	11.569 GB ~ 0.658%	MU Brno
16		10.966 GB ~ 0.624%	UK Praha
17	2001:718:1e03:5166:9528:4955:40d8:447d	9.752 GB ~ 0.555%	VSE Praha
18	2001:718:1e02:8144:4dad:ce17:b1d9:f39d	9.511 GB ~ 0.541%	VSE Praha
19	2001:718:1e02:9096:794aa:8d7:6823:f032	9.202 GB ~ 0.524%	VSE Praha
20	2001:718:1e02:8144:6400:cb15:93d3:277a		